

Length // ► Feed direction

Width



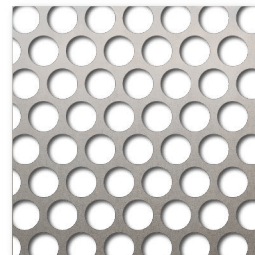
R4 T5

Figure drawn to scale 1:1

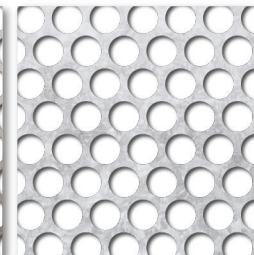
R4 T5



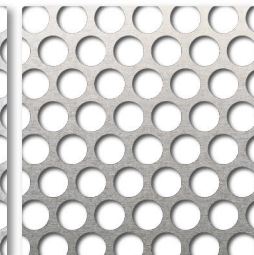
Available materials*



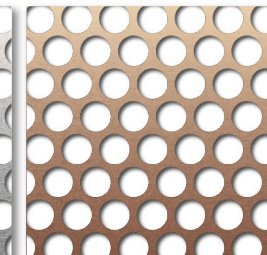
Steel



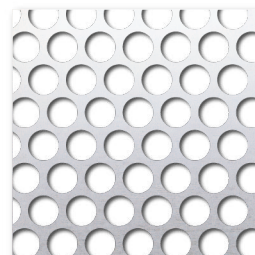
Sendzimir-galvanised



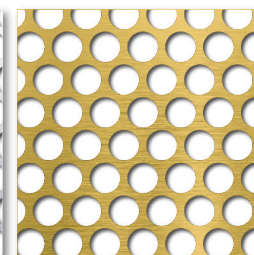
Aluminium



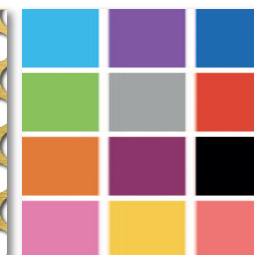
Copper



Titanium Zinc

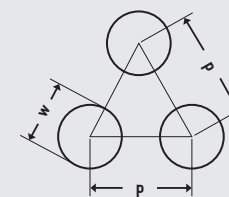


Brass



Powder-coated

Available in standard formats and **individual dimensions (w x l) of at least 125 x 300 mm to maximum 1,500 x 3,000 mm**, as well as in sheet thicknesses from 0.7 to 1.0 mm.



Round holes 60 degree staggered pitch (RT)
w = 4 mm
p = 5 mm
Open area: 58.05 %

* Not all materials are available in all formats and sheet thicknesses.



.....
**SELECT AND ORDER
ONLINE**
.....

All variants of this product can be found online in our shop. **Simply enter the product name in the online search.**

