

Length // ► Feed direction

Width



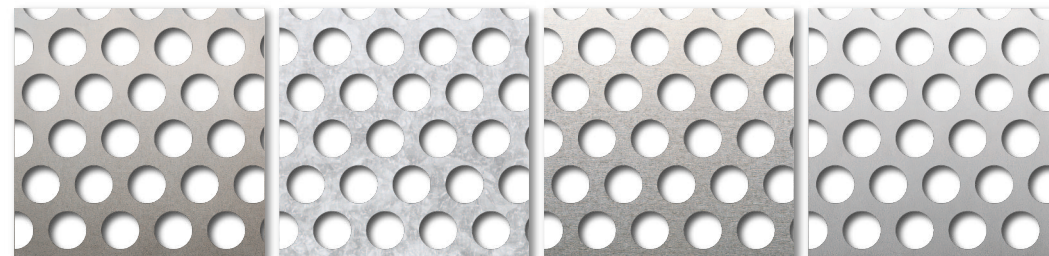
R5 T7

Figure drawn to scale 1:1

R5 T7



### Available materials\*

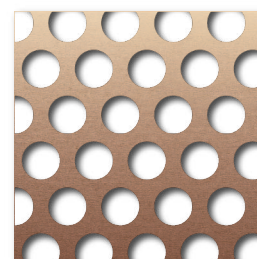


Steel

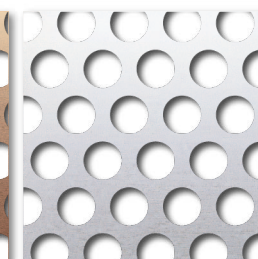
Sendzimir-galvanised

Aluminium

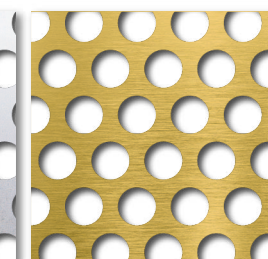
Stainless steel



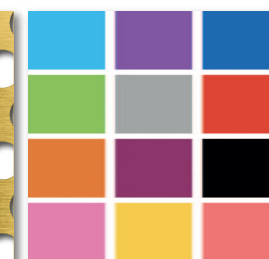
Copper



Titanium Zinc

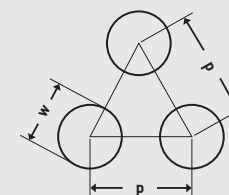


Brass



Powder-coated

Available in standard formats and **individual dimensions (w x l)** of at least **125 x 300 mm** to maximum **1,500 x 3,000 mm**, as well as in sheet thicknesses from **0.7 to 2.0 mm**.



Round holes 60 degree  
staggered pitch (RT)  
w = 5 mm  
p = 7 mm  
Open area: 46.28 %

\* Not all materials are available in all formats and sheet thicknesses.



.....  
SELECT AND ORDER  
ONLINE  
.....

All variants of this product can be found online in our shop. Simply enter the product name in the online search.

